



LANCASTER CANAL
TOWPATH TRAIL



WALK IT!
EXPLORING BY FOOT



© Siska Vrijburg via unsplash.com

THE LEVENS HALL LOOP

Explore the beautiful Levens Hall and Gardens and the ancient and listed monuments at Hincaster Tunnel.

Admire Sedgwick House and the deer of Levens Deer Park before returning for well-earned refreshments at Levens Hall Café.

The walk starts from the car park at Levens Hall. You may encounter livestock along this route so leads are advised if you bring your dog.

TRAVEL INFORMATION

Arriving by Bus: Stagecoach operate bus services that run past the entrance. Visit [Stagecoach](#) for up-to-date timetables and fares.

Arriving by Car: Parking at Levens Hall is free.

Arriving by Bike: This walk is not suitable for most bikes; Bikes can be secured to the bike racks located near the entrance kiosk.

WALK IT! AT A GLANCE



TIME
2 hours



DIFFICULTY
Moderate



DISTANCE
4.2 miles



TERRAIN
Mixed

Please Note: This route can get very muddy wellies or walking boots are recommended.



THE LEVENS HALL LOOP ROUTE

Follow the points below and tick them off as you go!

1. Starting at Levens Hall cross the main road taking extra care to cross.
NOTE: This is a 60mph road, please cross with caution.

2. After crossing, turn right towards the bus shelter.

3. Once there, turn left following the public right of way signpost. You will pass a large cottage on your left; continue to follow the path towards a farm house.

4. Continue until you reach the farmhouse. You will see steps in the wall and public footpath sign on your right.

5. Climb over the wall into the adjoining field.

Head north up the hill through the fields, take in the view at the brow of the hill before heading down to the right to loop around towards Hincaster Hall.

6. Go straight through the gates at the bottom to pass Hincaster Hall on your left. From here you will join a minor road which takes you down towards Hincaster village.

7. Cross the main road in Hincaster and follow the sign for Tewitfield which highlights the path directly in front of you and leading between two gates. This is the starting point of the Hincaster Tunnel 'Horse Path' a listed ancient monument.

FUN FACT: The horse path was created because Hincaster Tunnel, had no towpath so horses were led over the hill to the other side whilst the canal boat was 'legged' though the tunnel to be reunited with its horses at the other end.

8. Walk up and over the horse path, passing under small access tunnels as you go. Continue straight ahead down the narrowest path at the crossroads marked by two wooden gates at either side.

9. Continue along the horse path until you find the Hincaster Tunnel entrance and interpretation signage. From here walk down the path towards Wellheads Lane, leaving the tunnel behind you.

10. Turn left onto Wellheads Lane and continue along this quiet lanes for approx. 1.4km until you reach a public footpath sign next to a double gate on your left. Turn up the hill, following the sign and walk up the steep hill (there is a bench at the top!)

11. Take the path crossing the middle of the field - there is a small cluster of trees on your left and Sedgwick village in the distance on your right.

12. Cross over the former canal bridge and continue straight ahead towards the road. Go through the Victorian kissing gates to cross the road and enter the field directly opposite. Sedgwick Hall will now become visible on your right.

13. Continue straight ahead on this path until you see the exit which was once part of a formal entrance to Sedgwick Hall.

THE LEVENS HALL LOOP ROUTE

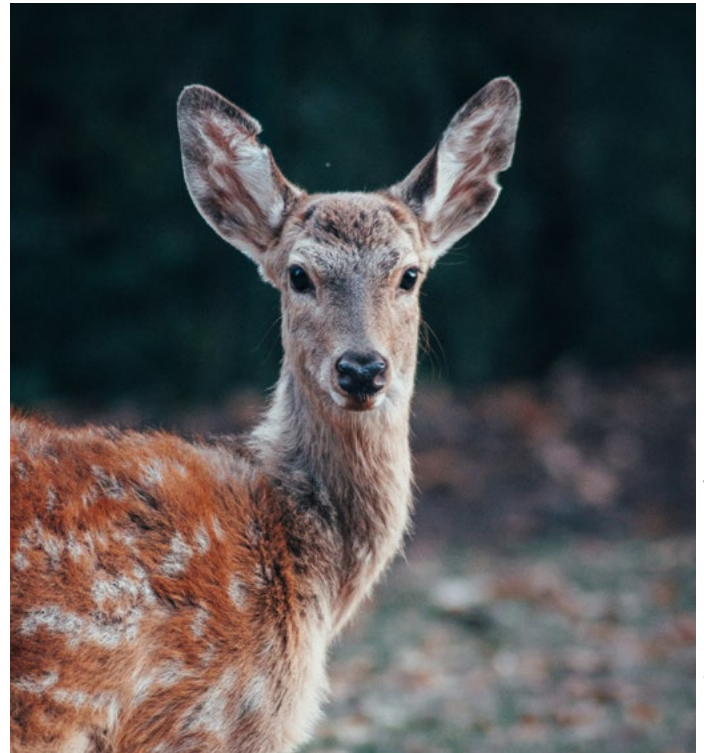
Follow the points below and tick them off as you go!

14. Walk down towards the bottom corner of this field to meet the Well Heads Lane.

15. Please take when crossing the road to join the bridge, crossing river then turning left onto Force Lane so the river is on your left.

16. Walk along Force Lane with the River Kent on your left for approx. 250m before it turns into an elevated footpath.

17. Exit via the steps leading up and continue along the quiet lane until you see the footpath sign for Levens on your left (after a cluster of houses).



© Benjamin Raffetseder via unsplash.com

18. Step over the stile and follow the field edge keeping the wall and trees on your left. Step over the wall using the steps and continue straight ahead.

19. Follow the wall until you reach steps on your left which cross up and over the wall into Levens Deer Park.
NOTE: If you have a dog with you please put them on a lead when walking through Levens Deer Park.

20. Follow the public footpath sign to the right and walk through the park with the river on your left and deer all around. You can exit the park on to the main road and cross over to enter Levens Hall.



© Jonny Gios via unsplash.com



**LANCASTER CANAL
TOWPATH TRAIL**

Our funders:



**Westmorland
& Furness
Council**



**Canal &
River Trust**
Making life better by water

The Towpath Trail between Kendal and Lancaster is a unique place for walking, cycling, paddling and general rural enjoyment!

The Towpath Trail aspires to be fully accessible, welcoming and enabling all users to enjoy the Towpath Trail between historic Kendal and Lancaster.

Discover more at lancastercanaltowpathtrail.co.uk

